



LAWRENCE BAR & GRILL

CONFIDENTIAL BUSINESS FOR SALE | Lawrence, KS



BUSINESS SALE PRICE: \$150,000 | 4,000 SF SPACE

DEMOGRAPHICS

	1 mile	3 miles	5 miles
Estimated Population	16,184	67,111	96,316
Avg. Household Income	\$76,932	\$83,356	\$95,091

- Bar and grill with long operational history
- Lease ends August 2024 and has two five year options
- Liquor license and FF&E included in sale price
- New roof and new asphalt in parking lot



CLICK HERE TO VIEW MORE LISTING INFORMATION

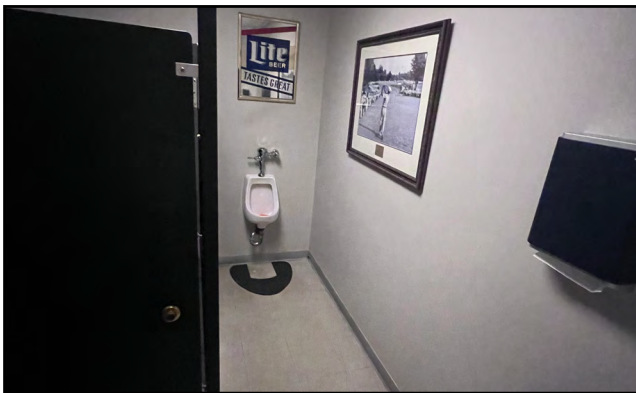
For More Information Contact:

PAUL MASSALI | 816.412.7409 | pmassali@blockandco.com

PHIL PECK | 816.412.7364 | ppeck@blockandco.com



PHOTOS





LAWRENCE BAR & GRILL

CONFIDENTIAL BUSINESS FOR SALE | Lawrence, KS

FURNITURE, FIXTURES, & EQUIPMENT LIST

Front Room/ Main Bar area

- 28 Bar Stools
- 5 Double Booths
- 5 Normal sized tables
- 4 High-top Bar Tables
- 5 Vintage Busch Lite lamp Shades
- 1 Furnace/AC unit
- Tons of Silverware
- 5 TVs
- 2 Ceiling fans
- Majority of wall decoration is owned by the owner; will not be included in sale

Main Bar

- 1 Glass Freezer
- 1 Beer Cooler plug in
- 1 Coffin Cooler
- Bag In Box Coca Cola rack
- 2 Ice Sinks
- 5 Cases of Pint Glass
- 4 Cases of 32oz Mugs
- \$5000+- in Liquor, Beer, Wine
- Clover POS System- leased
- 3x4 Lighted Messaging Board
- Coffee/Ice Tea maker
- 9-option keg system/ walk in cooler immediately behind the wall; no long cables
- Majority of back bar decorations are owned by owner; will not be included in sale

Back Room

- 3 High-top Tables
- 14 Bar Stools
- 3 Double Booths
- 1 6-top Booth
- 1 couples Booth
- 32 Chairs
- 5 Tables
- 1 Dart Board
- 1 Coors Lite vintage Pool Table Light
- 6 Vintage Bush Lite Lamp Shades
- Pool Table- leased
- Pinball Machine- leased
- Golden Tee- leased
- Dragon-leased
- Galica- leased
- Jukebox- leased
- Majority of wall decorations are owned by the owner; will not be included in sale



LAWRENCE BAR & GRILL

CONFIDENTIAL BUSINESS FOR SALE | Lawrence, KS

FURNITURE, FIXTURES, & EQUIPMENT LIST

Table Top Gaming System- leased

1 ATM- not owned by Murfs but serviced by a local regular

2 Dollys

1 ladder

Mixed bag of tools

Several boxes of Holiday decorations

2 Ceiling Fans

1 Furnace/AC unit

3 TVs

Waitress Station

Several boxes of glassware

2 small filing cabinets- in office

1 safe-office

2 Bathrooms- with proper stall equipment and sinks

Roses Room (Banquet Room)

52 Chairs

2 highchairs

11 tables

1 piano

1 TV

1 Waitress station

1 set up cabines

Banquet Equipment- chafers, dishes, bowls, etc.

2 Bathrooms- with proper stall equipment and sinks

Majority of wall decorations are owned by owner; will not be included in sale

Kitchen

2 Sinks

1 3-compartment sink

6 Disposal sink

3 Fryers – one does need a little work

Table Top Grill

Vulcan over/table Top Grill/2 eye burning

4 Stand up Freezers

1 floor freezer

1 Work station table

1 Walk in Cooler

New Exhaust system brought up to Code; August 2023

1 Floor safe

2 Furnaces

Ice Machine

\$4000+- in Food inventory

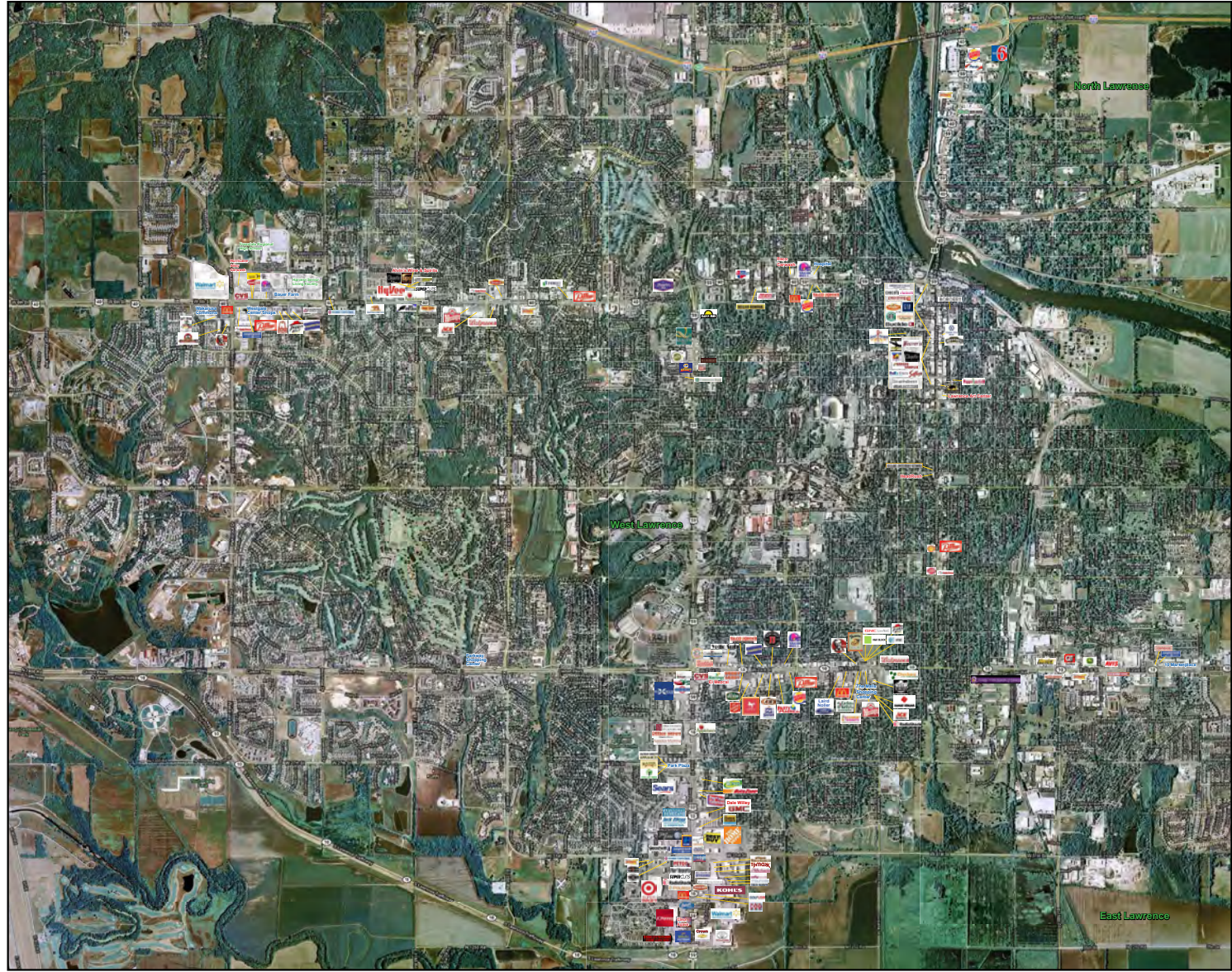
Tons of cooking equipment; pots, pans, plates, etc.



LAWRENCE BAR & GRILL

CONFIDENTIAL BUSINESS FOR SALE | Lawrence, KS

AERIAL





LAWRENCE BAR & GRILL

CONFIDENTIAL BUSINESS FOR SALE | Lawrence, KS

Subject Site	1 mi radius	3 mi radius	5 mi radius
Lawrence, KS 66049			
Population			
2023 Estimated Population	12,409	82,312	97,457
2028 Projected Population	12,842	83,913	99,594
2020 Census Population	12,088	81,720	96,733
2010 Census Population	11,750	75,142	89,713
Projected Annual Growth 2023 to 2028	0.7%	0.4%	0.4%
Historical Annual Growth 2010 to 2023	0.4%	0.7%	0.7%
2023 Median Age	31.6	30.9	31.1
Households			
2023 Estimated Households	5,700	35,255	41,249
2028 Projected Households	5,904	35,987	42,197
2020 Census Households	5,530	34,548	40,407
2010 Census Households	5,144	30,380	35,821
Projected Annual Growth 2023 to 2028	0.7%	0.4%	0.5%
Historical Annual Growth 2010 to 2023	0.8%	1.2%	1.2%
Race and Ethnicity			
2023 Estimated White	78.0%	72.1%	72.3%
2023 Estimated Black or African American	5.5%	5.0%	5.3%
2023 Estimated Asian or Pacific Islander	6.7%	13.3%	12.4%
2023 Estimated American Indian or Native Alaskan	1.1%	1.3%	1.4%
2023 Estimated Other Races	8.7%	8.4%	8.7%
2023 Estimated Hispanic	6.5%	6.9%	7.1%
Income			
2023 Estimated Average Household Income	\$97,576	\$96,366	\$96,186
2023 Estimated Median Household Income	\$67,374	\$68,826	\$69,392
2023 Estimated Per Capita Income	\$44,854	\$41,765	\$41,187
Education (Age 25+)			
2023 Estimated Elementary (Grade Level 0 to 8)	1.0%	0.7%	0.9%
2023 Estimated Some High School (Grade Level 9 to 11)	4.4%	2.6%	2.7%
2023 Estimated High School Graduate	16.5%	15.8%	16.8%
2023 Estimated Some College	14.2%	17.2%	17.5%
2023 Estimated Associates Degree Only	4.6%	5.6%	6.1%
2023 Estimated Bachelors Degree Only	31.4%	30.0%	29.7%
2023 Estimated Graduate Degree	27.9%	28.1%	26.3%
Business			
2023 Estimated Total Businesses	449	2,719	3,185
2023 Estimated Total Employees	4,068	27,985	33,811
2023 Estimated Employee Population per Business	9.1	10.3	10.6
2023 Estimated Residential Population per Business	27.7	30.3	30.6

©2023, Sites USA, Chandler, Arizona, 480-491-1112 Demographic Source: Applied Geographic Solutions 4/2023, TIGER Geography - RS1

